

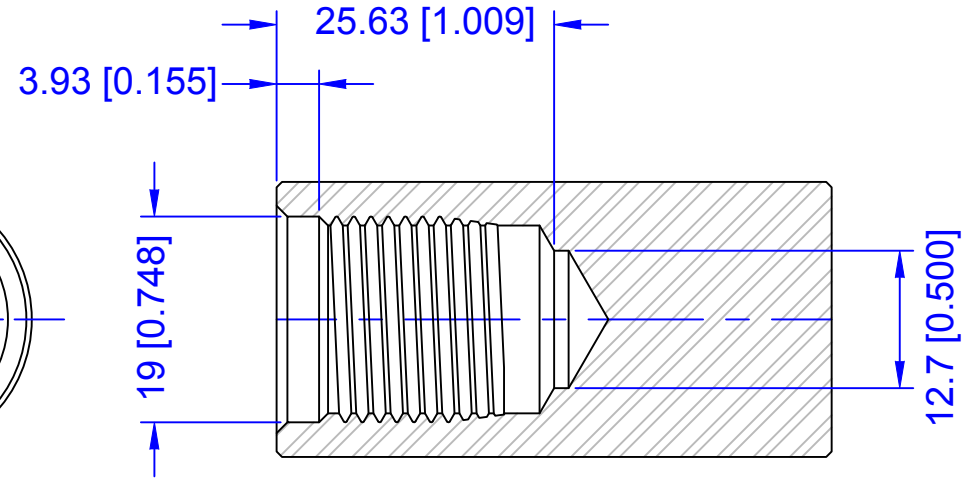
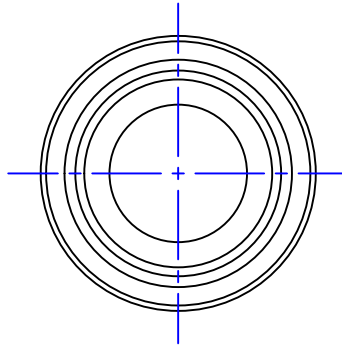
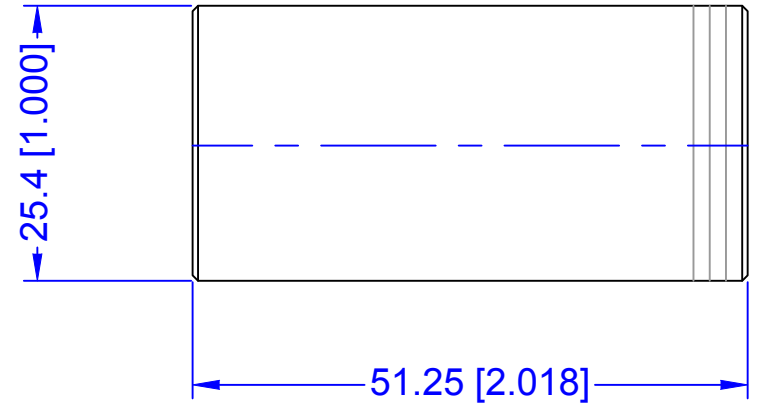
**Note:**

This is the Taig Blank Arbor. In the interest of full disclosure, there is a lot of guess work here ... especially at the bottom of the bore. Surface it to say you get:

- 1) a 4mm deep registration bore
- 2) 3/4-16 inch full threads at least 15mm deep
- 3) a 1/2 inch bore at least 1 inch deep

The OD's on the samples I had were from 25.33 to 25.40 mm. There are three lightly cut lines on the blank end. Made from some type of carbon steel. They will rust.

These are often used to make tool holders for things like end mills, drills, reamers, saws, etc.



This document/file is placed in the **PUBLIC DOMAIN**. The author assumes no liability for the accuracy, fitness or application of the information or design herein.  
Lewis Balentine, Houston, Texas, 15 February 2020

Unless otherwise noted all dimensions are in millimeters [inches]

This is a 3/8 inch Tool Holder made from blank arbor. The sample I have used a #10-32 hex head cap screw. It is likely better to use a set screw so one can have more threads.

